



**Atkinson Place Estate**  
Merle Crescent, Truganina  
Lot 232

**Facade:** Sahara

**House:** 18.41 sq **Land:** 320 m2

4  
 2  
 1  
 2

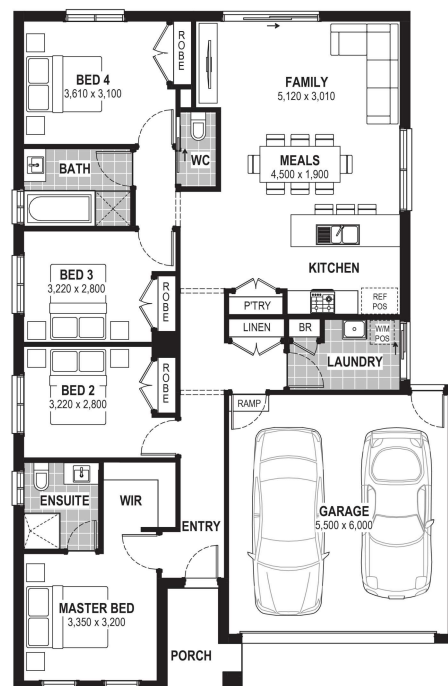
## Spice 18

### Inclusions

- Truecore Steel House Frame
- Colorbond Steel Roof (with Sarking)
- High Performance Double Glazed Windows & Doors
- 8 Star Energy Efficient
- 7 x 440w Panels & 3KW Inverter (single phase)
- Bushfire Compliance to BAL 12.5
- 50 Year Structural Guarantee
- Range of stylish colour schemes
- Overhead Cabinetry to Kitchen
- Tiled Shower Bases
- Laundry Cabinetry
- Remote Garage Door with Openers
- 2550 Ceiling Height
- Deluxe Electrical Pack
- Dishwasher
- Flooring (Carpet & Laminate)
- Sahara Facade
- Stone Benchtops throughout
- Concrete Driveway up to 35qm
- Evaporative Cooling

### Contact:

Kathy Salva  
0408 842 790  
houseandland@jgking.com.au



\*Conditions apply, speak to your New Home Advisor for future details. Not all house and land packages are created as standard or on blocks that are optimally orientated and therefore JG King Homes cannot guarantee that it will achieve an 8 star NatHERS performance rating. Please talk with your new home advisor to see whether this package is classified as standard and optimally orientated in order to achieve an 8-star rating at no additional cost.